

## BETA GRID

T-grid lighting system

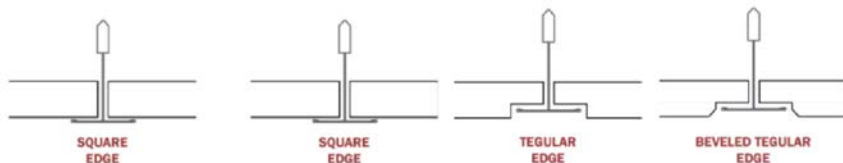
The BETA GRID comes with a matt lens in White. Engineered to work with 15mm, 24mm and 25mm T grid ceiling structures to minimise waste, reduce installation costs and create stunning lighting designs.

- 90° beam angle as standard with 30° and 60° also available, on request.
- Standard lengths available are 580mm and 1180mm to fit 600mm and 1200mm T bars. Other lengths are available on request.
- The GRID LIGHT range is compatible with a number of different tile edges as per the diagram below.

### Compatibility

15mm T grid bar

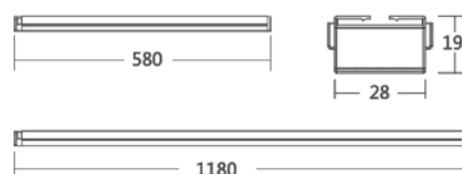
24mm T grid bar



### Technical Data

Description	Power(W)	Voltage (V)	Total Flux (lm)	Efficiency (lm/W)	Colour (K)	CRI	Freq (Hz)	Length (mm)
Matt Lens	14	220	1666	119	3000	80	50	580
Matt Lens	14	220	1764	126	4000	80	50	580
Matt Lens	14	220	1764	126	5000	80	50	580
Matt Lens	28	220	3388	121	3000	80	50	1180
Matt Lens	28	220	3696	132	4000	80	50	1180
Matt Lens	28	220	3724	133	5000	80	50	1180

### Dimensions



### Warranty

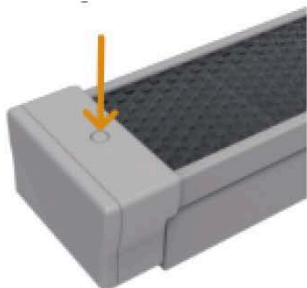
1-year guarantee available as standard

5-year extended warranty available on request

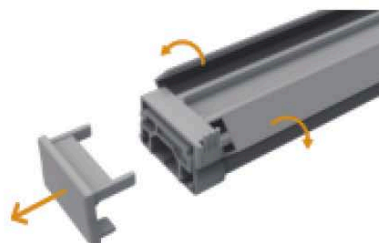


## BETA GRID

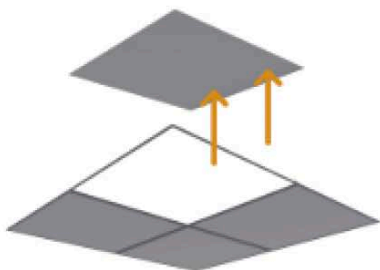
### Installation Instructions



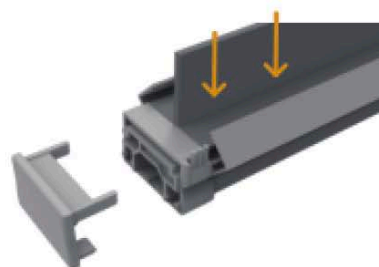
1. Pin the dot on the end cap to release the Safety Plugs.



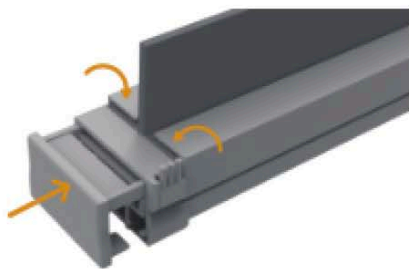
2. Remove the safety plugs to allow the T bar buckles to unfold freely.



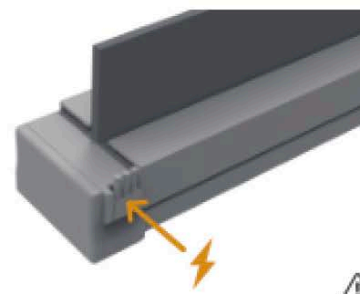
3. Remove the tiles off the T grid ceiling system for easy installation.



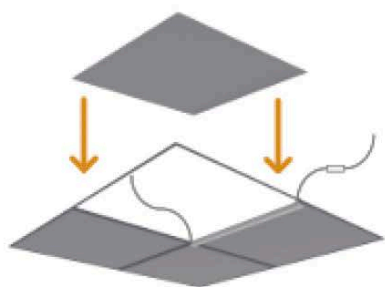
4. Attach to the flat part of T bar on the ceiling.



5. Fold the T bar buckles on the T bar and push the Safety Plugs into the end cap.



6. Place the cables alongside to the T bar.



7. Place the tiles back to the ceiling.



8. Now the installation is completed.